

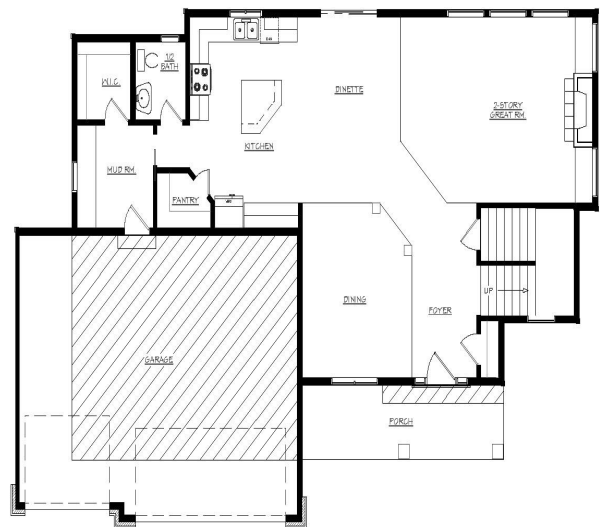
THE EDINBOROUGH

2,872 Sq.Ft. - 4 Bedroom 2-1/2 Bath

This exquisitely designed two story boasts 4 large bedrooms with 2-1/2 baths including an owners luxury bath with separate shower, oversized soaking tub with tile surround, and a double bowl master bath vanity. The spacious master bedroom includes a vaulted ceiling and a double door entry. The main bath is a jack and jill between 2 of the bedrooms. Second floor laundry room. Spacious main floor living area with gas fireplace surrounded by custom built shelving, large dinette and eat-in kitchen area, and a separate dining room. Must see to believe!!

INCLUDED FEATURES:

- Full Front Porch
- Oversized 3 Car Garage
- 9' Ceilings Main Level
- Custom Staggered Kitchen Cabinetry
- Black Appliances
- Gas Fireplace
- Luxury Owners Bath
- 2nd Floor Level Laundry
- Formal Dining Room
- Large Mudroom with Walk-in Closet
- Wide White Enameled Trim
- 2-Panel White Doors
- Brushed Nickel Hardware
- Complete Landscape Package
- Fully Sodded Yard with Irrigation System



Smart Designs & Stylish Living

Building Dreams That Last

www.KMichaelHomes.com

Mike Meyer

(612) 685-0927

Kevin Ciancanelli

(952) 292-3808

Mike@MeyerRealEstateTeam.com

Kevin@KMichaelHomes.com